

Hima Seafood



Illustration: Hima Seafood

Project at a glance

Customer
Eyvi

SIMONA Stadpipe delivery
engineering of pipe systems, delivery of 3D models and drawings of complete system, including production and installation drawings.

Special products
Manifolds, Mortality boxes, Outlet Funnel for fish

Standard products
Segment welded bends / T-pipes, injected parts and fittings, reduced T-pipes, reductions

Installation
All process installation below and above ground.

Duration of project
01.08.2022 - June 2024

"The worlds largest land-based trout farm"

At Rjukan in Telemark, Hima is establishing what is expected to be one of the world's largest land-based trout farms. The facility is based on RAS technology, also known as Recirculating Aquaculture Systems, a sustainable and environmentally conscious form of aquaculture production.



Startup Hima

Initial situation

Planning for a land-based farming facility in Rjukan has been going on for almost ten years, and in August 2022 Hima Seafood started construction of the large RAS facility which will produce around 8,000 tonnes of trout a year. Water will be collected through an eleven kilometer long pipe from Lake Tinnsjøen. The building that will house the facility will be around 27,000 square meters over two levels, and will be one of Telemark's largest buildings.

Task

SIMONA Stadpipe has a contract with Eyvi for the design, delivery and installation of a complete pipe technical facility in Rjukan. Delivering approx. 21,000 meters of pipes in dimensions from 50mm to 1400mm, and around 1200 valves in dimensions from 50mm up to 1200mm.



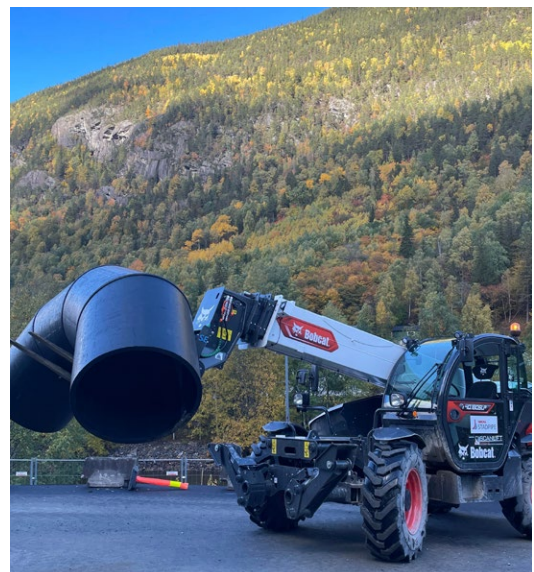
Pipes under ground ongoing

Solution

SIMONA Stadpipe supplies a turnkey system for process pipes to the plant including assembly. 95% of the pipes and pipe parts used are PE 100, in addition to special products produced by SIMONA Stadpipe for the aquaculture industry.



Overview of facility



Transport of pipes